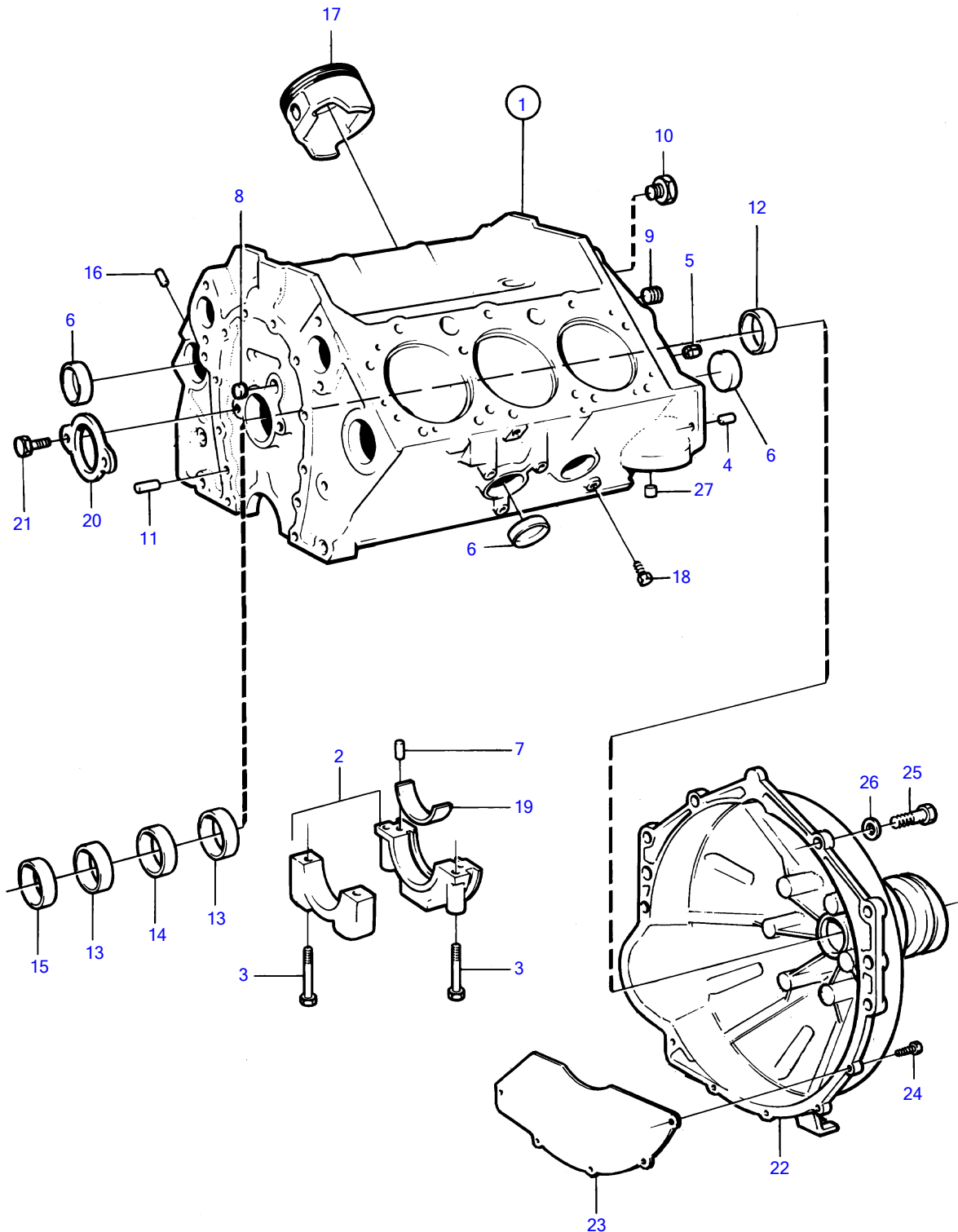


432A, 434A



11409

432A, 434A

| REF | PART NO. | QTY | DESCRIPTION        | SEE SEC. | NOTES                                   |
|-----|----------|-----|--------------------|----------|---|
| 1   |          | 1   | cylinder block     |          | Included in basic engine, See group 10A |
| 2   |          | 4   | • bearing cap      |          |   |
| 3   | 835037   | 8   | • Screw            |          |   |
| 4   | (818989) | 2   | • Locating pin     |          | Obsolete part                           |
| 5   | 855828   | 1   | • Locating pin     |          |   |
| 6   | 835039   | 8   | • Expansion plug   |          |   |
| 7   | 835040   | 2   | • Locating pin     |          |   |
| 8   | 856230   | 4   | • Plug             |          |   |
| 9   | 968145   | 4   | • Plug             |          |   |
| 10  | 952075   | 1   | • Plug             |          |   |
| 11  | 835040   | 2   | • Locating pin     |          |   |
| 12  | 835496   | 1   | • Expansion plug   |          |   |
| 13  | 841423   | 2   | • Bushing          | 12456    |   |
| 14  | 841424   | 1   | • Bushing          | 12456    |   |
| 15  | 841422   | 1   | • Bearing          | 12456    |   |
| 16  | 835497   | 4   | • Locating pin     |          |   |
| 17  |          | 6   | • piston           | 12449    |   |
| 18  | 192134   | 3   | • Plug             |          |   |
| 19  |          | 3   | • main bearing kit | 12449    |   |
| 20  | (856408) | 1   | Retainer           |          | Obsolete part                           |
| 21  | 856409   | 2   | Screw              |          |   |
| 22  | 872113   | 1   | Flywheel housing   |          |   |
| 23  | 854939   | 1   | Cover plate        |          |   |
| 24  | 947224   | 5   | Hexagon screw      |          |   |
| 25  | 955536   | 6   | Hexagon screw      |          |   |
| 26  | 942336   | 6   | Spring washer      |          |   |
| 27  | 841737   | 1   | Valve              |          |   |